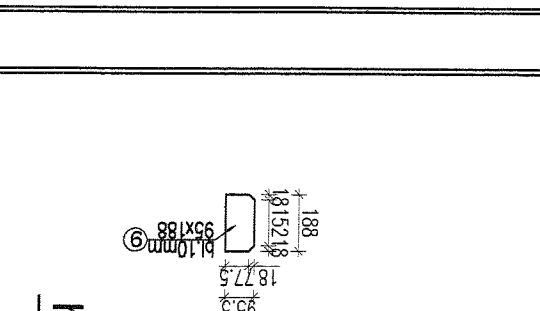
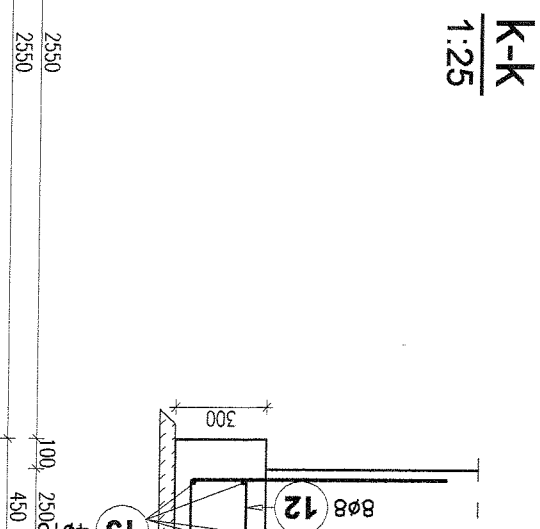
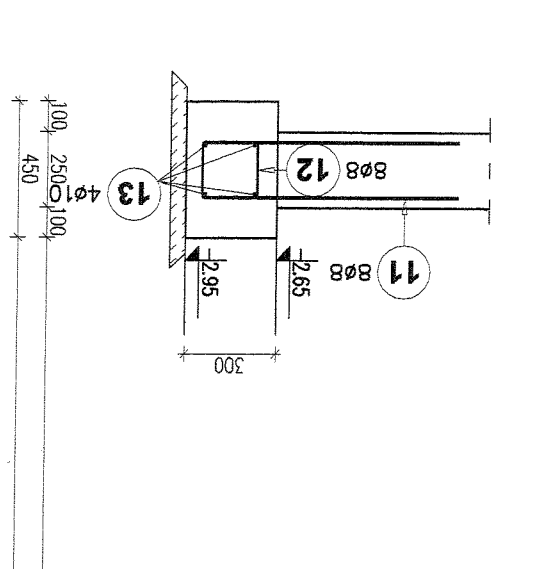
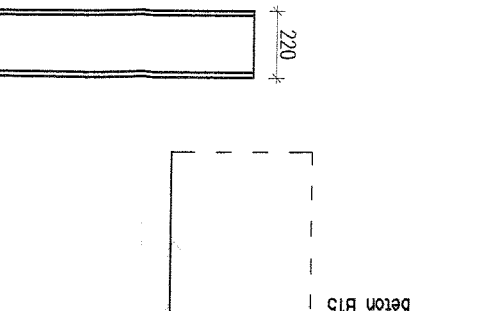
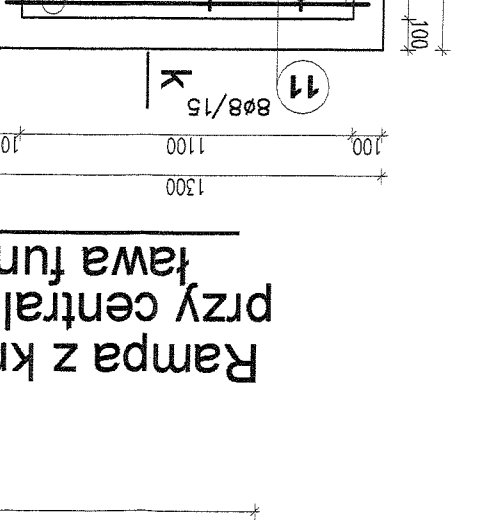
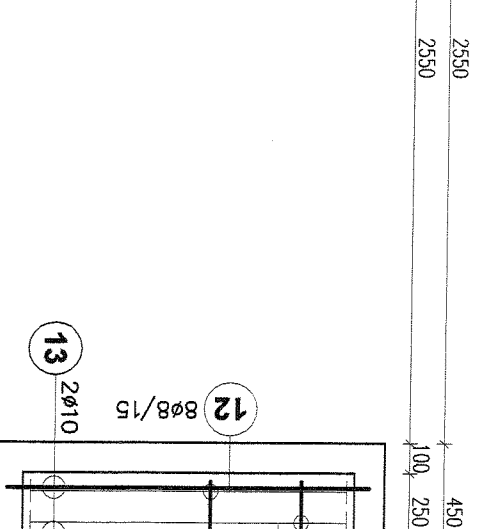
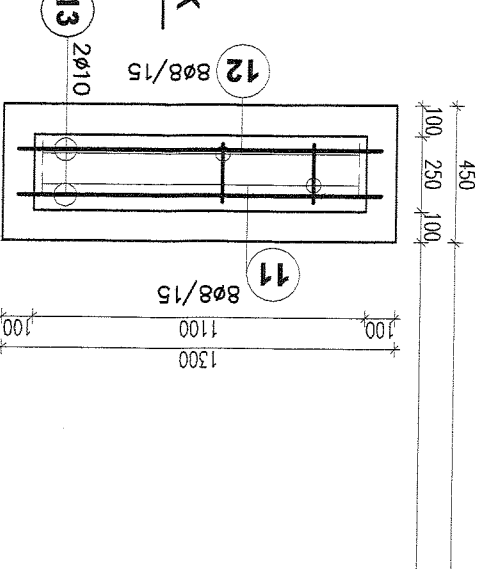
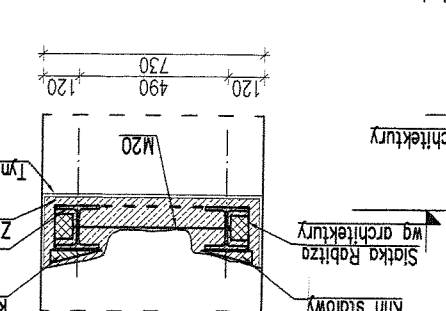
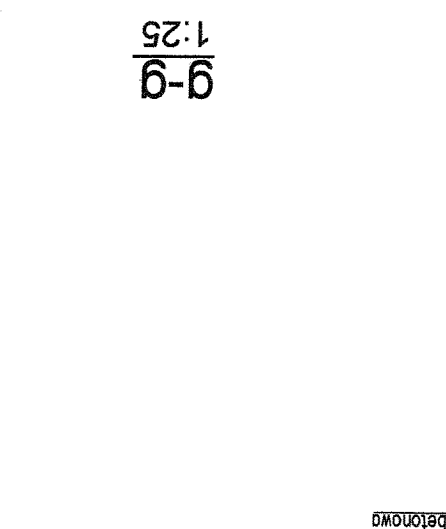
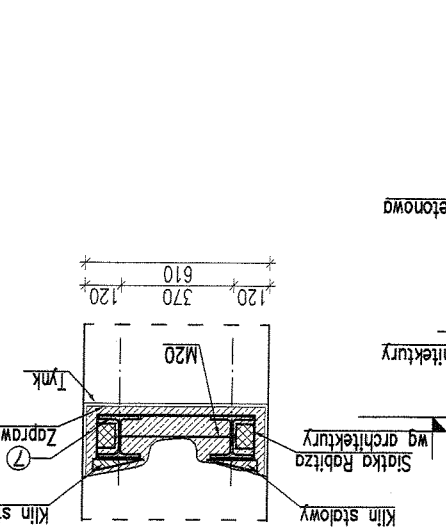
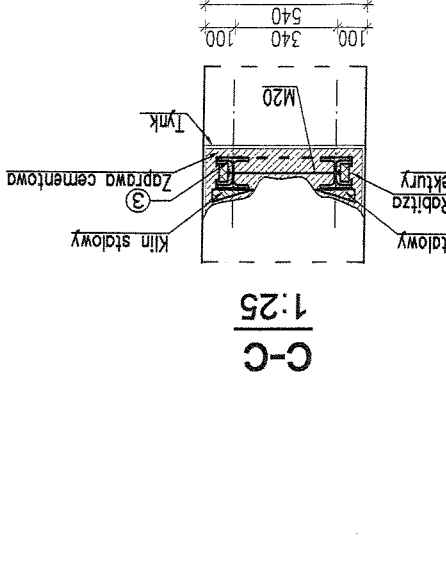
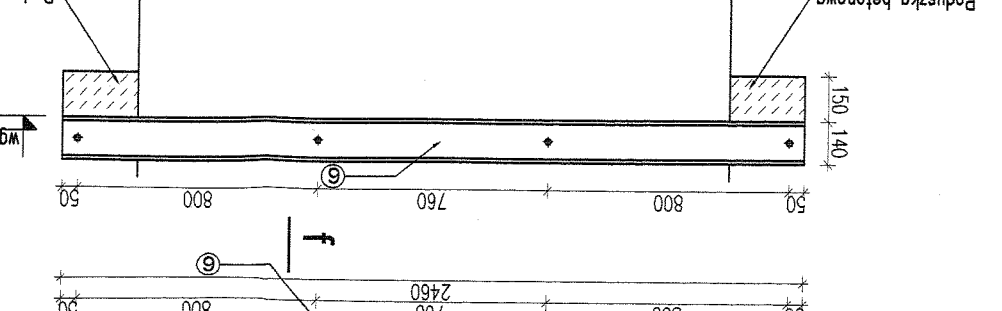
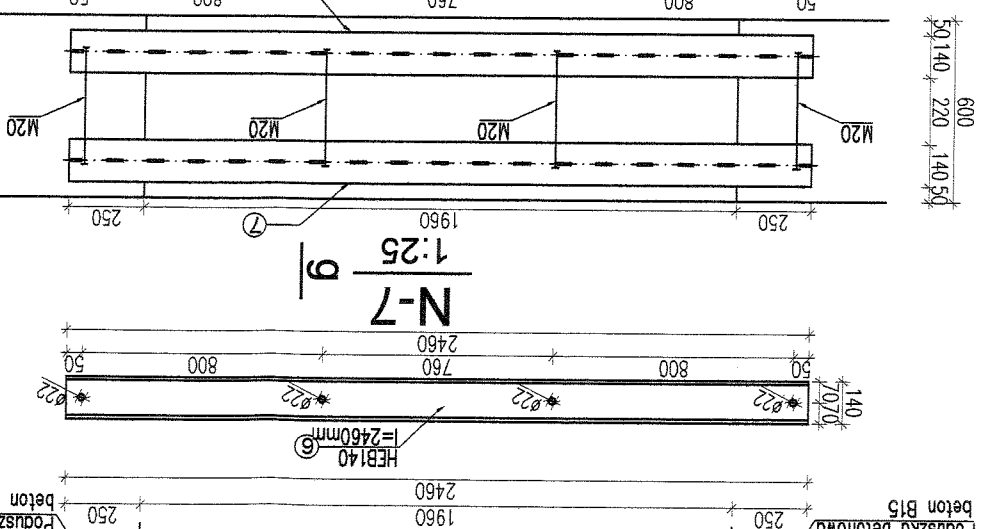
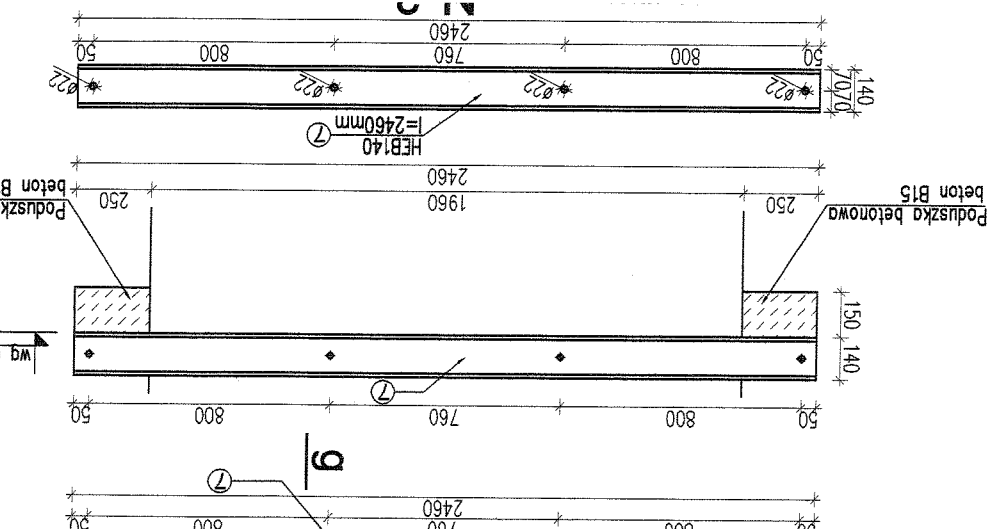
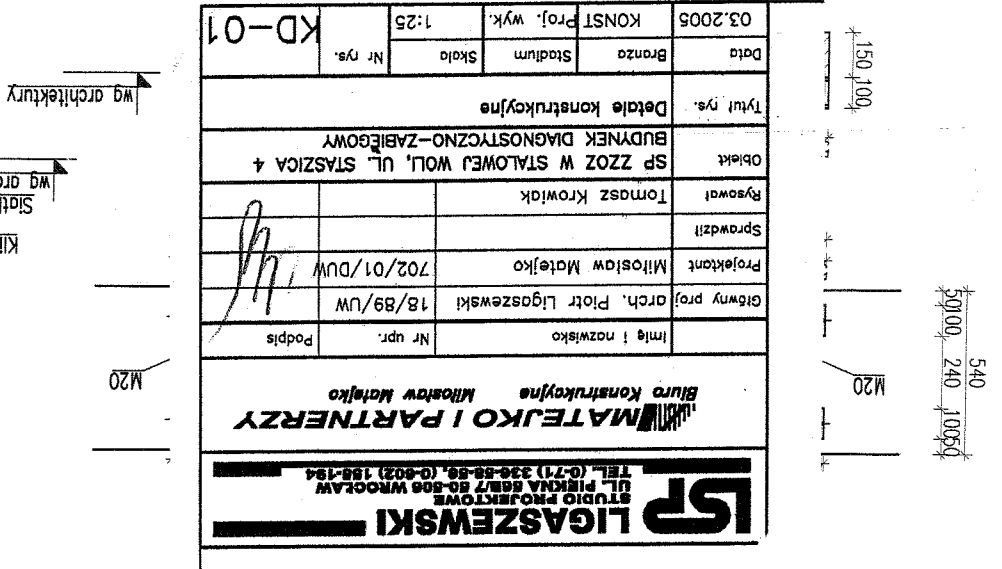
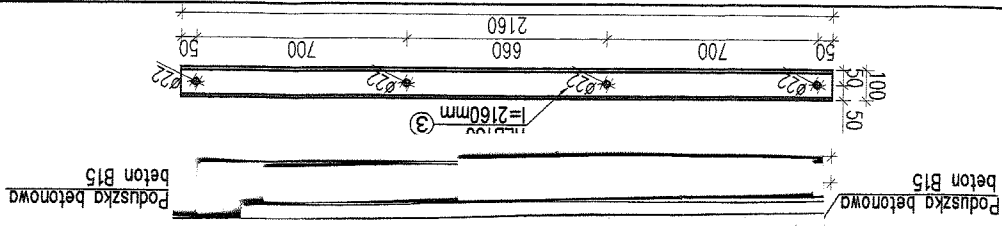


|   |  |           |  |   |  |         |  |
|---|--|-----------|--|---|--|---------|--|
| <b>STUDIO PROJEKTOWE</b><br><b>UL. PIENIA 66B/7 60-606 WRÓCLAW</b><br><b>TEL. (0-71) 336-88-88, (0-802) 188-184</b> |  |           |  | <b>BIURO KONSZYKOWNE</b><br><b>Milosław Matejko</b> |  |         |  |
| Imię i nazwisko   |  | Nr upr.   |  | Podpis  |  |         |  |
| Główny proj. arch. Piotr Ligaszewski  |  | 18/89/UW  |  |   |  |         |  |
| Projektant Miłosław Matejko   |  | 702/01/DW |  |   |  |         |  |
| Sprawdził   |  |           |  |   |  |         |  |
| Rysował Tomasz Krowiak  |  |           |  |   |  |         |  |
| Objekt SP ZZOZ W STAŁOWEJ WOLI, UL. STASZICA 4  |  |           |  |   |  |         |  |
| Tytuł rys. Detale konstrukcyjne   |  |           |  |   |  |         |  |
| Data 03.2005  |  | KONST     |  | Proj. wyk.  |  | 1:25    |  |
| Bronza  |  | Stadium   |  | Skala   |  | Nr rys. |  |
| KD-01   |  |           |  |   |  |         |  |



Rampa z kratki pomostowych przy centrali gazow medycznych

